

TVMax+

User Guide



Table of contents

Introduction and Overview of TVMax+	1
Introduction and System requirements	2
Overview of TVMax+	3
Hardware and Software installation	4
Hardware installation	5
Connecting your video source	5
Software installation	7
Setting up the TV tuner for viewing and recording	8
Introduction	9
Serial Number and Registration	9
Setting up TVMax+ for TV reception	9
Using the TVMax+ Menus	12
TVMax+ Menus	13
Using the TVMax+ Onscreen Remote	18
TVMax+ onscreen remote	19
Using the TVMax+ Preferences	20
TVMax+ preferences overview	21
The General menu	22
The Video input menu	23
The image sub-menu	23
The Video compression sub-menu	24
The Audio sub-menu	25
The TV Tuner sub-menu	26
The plugins menu	27
Scheduling a recording with TVMax+	28
Schedule a recording with TVMax+	29
Scheduling a recording with TitanTV	32
Registering with TitanTV	33
TitanTV plug-in settings	33
Scheduling a recording	34
Scheduling a recording with tvtv	35
Initial setup	36
tvtv plug-in settings	36
Using the tvtv service	37
TVMax+ Plug-ins	39
Using the Plug-ins	40
Current Plug-ins	41
Playing back files created with TVMax+	42
Software Video Players	43
Codecs	43
Warranty agreement	44

Introduction and Overview of TVMax+

Introduction

Thank you for choosing TVMax+™ from Miglia Technology. TVMax+™ allows you to watch and record TV and video on your Mac. You can record to MPEG-4 in real-time, thus delivering immediate compatibility with Apple's iPod Video and Apple TV.

System requirements:

- Mac with USB 2.0 connectivity
- G4/1.25 GHz or higher processor
- 512 MB of RAM
- Mac OS X 10.4.x
- QuickTime 7

Package contents

- TVMax+™
- Infrared Remote Control
- CD-ROM with software and installation guide
- Power Supply
- USB 2.0 Cable (A/B)
- Warranty card

User Guide Overview

This User Guide will guide you through the hardware and software installation as well as explain the functions and options of the TVMax+™ software.

Technical Support

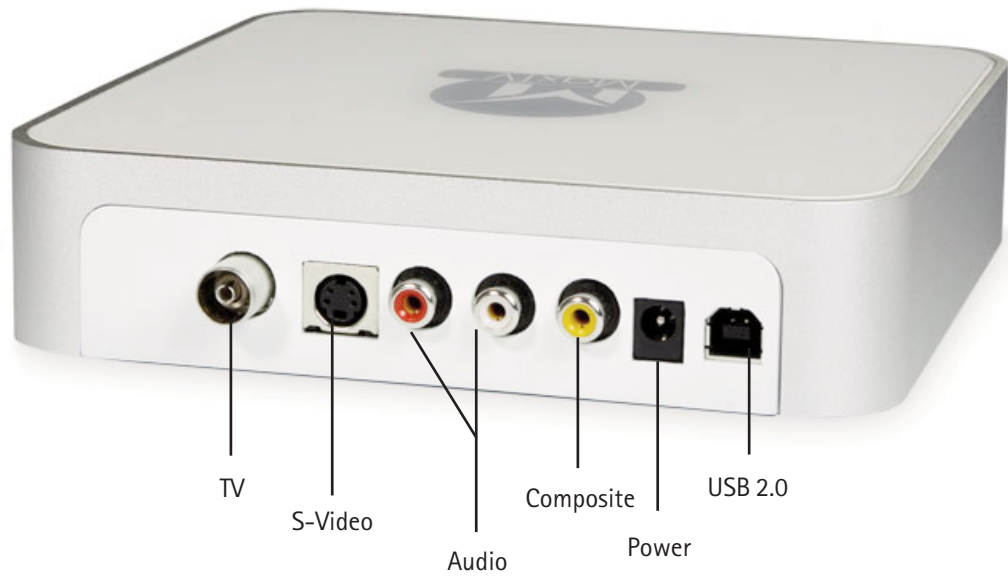
Should you ever have any questions regarding your product, please do not hesitate to contact Miglia Technology. The best way to contact technical support, is to fill out a 'Technical Support Case Form'. Please go to <http://www.miglia.com/Support> and click on the TVMax+ link.

Overview of TVMax+™

Video inputs

TVMax+™ features several video inputs:

- TV input
- Composite input
- S-Video input
- RCA Stereo audio input



- **TV/Antenna connection:** This is the TV Tuner connection. Connect a cable from your TV antenna or cable wall outlet. An adapter for 'threaded' connections is provided in the package.
- **Composite input:** Composite is a widely used standard for connecting video equipment. This type of connector is often found on camcorders and VCRs.
- **S-Video input:** This connection gives a better image quality than composite and is generally found on mid-range camcorders, VCRs and DVD players. If you intend to capture video from an analogue source, use this connection whenever you can.
- **Stereo audio IN:** TVMax+™ card uses conventional RCA plugs
- **Power:** Connector for the power supply included in the package.
- **USB 2.0:** For the connection to your Mac

Hardware and Software Installation

I. Hardware Installation

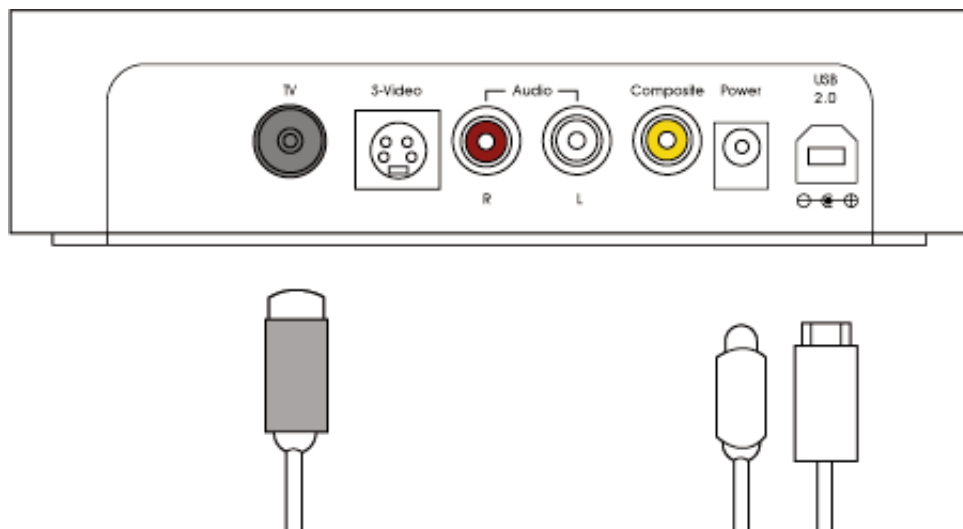
1. Connect the power supply to the "Power" socket located at the back of TVMax+. Verify the green LED on the front panel of the unit is lit.
2. Connect the USB 2.0 cable provided from a USB 2.0 port of your computer to TVMax+. Note: We strongly recommend using the USB 2.0 cable provided with TVMax+. Do not use low quality cables or very long cables as this will affect the performance of the unit.

II. Connecting your video source

1. Coaxial connection

If you receive TV channels via a roof-mounted antenna, an analogue cable service or a portable antenna, you will most likely want to use the TV input on TVMax+.

Connect your coaxial cable as shown on the illustration below

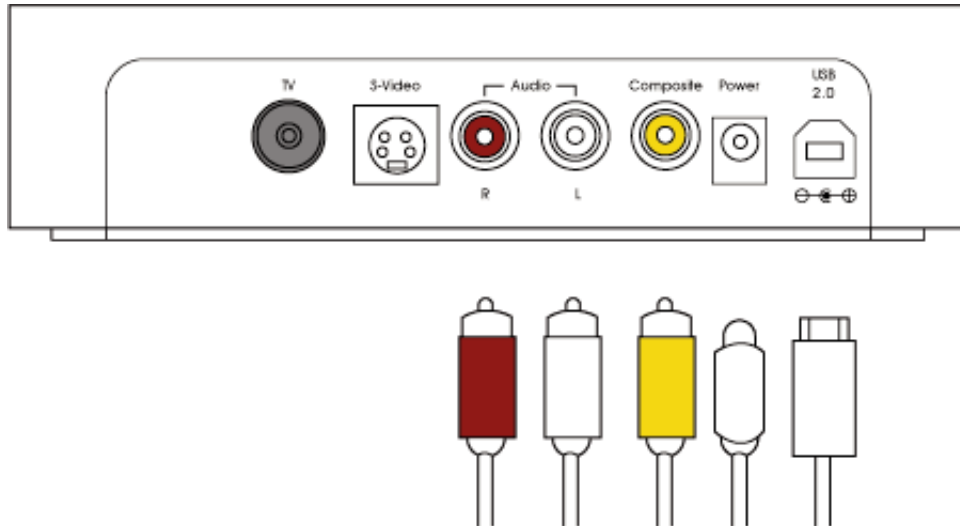


2. Composite Connection

Digital TV subscribers (Terrestrial, Cable, Satellite) will interface their digital receiver set top box with TVMax+. You can either make a connection via S-Video or Composite.

If you wish to capture video footage from a Camcorder, VCR or DVD-Player, a connection with Composite or S-Video is recommended.

The diagram below shows a connection via Composite.

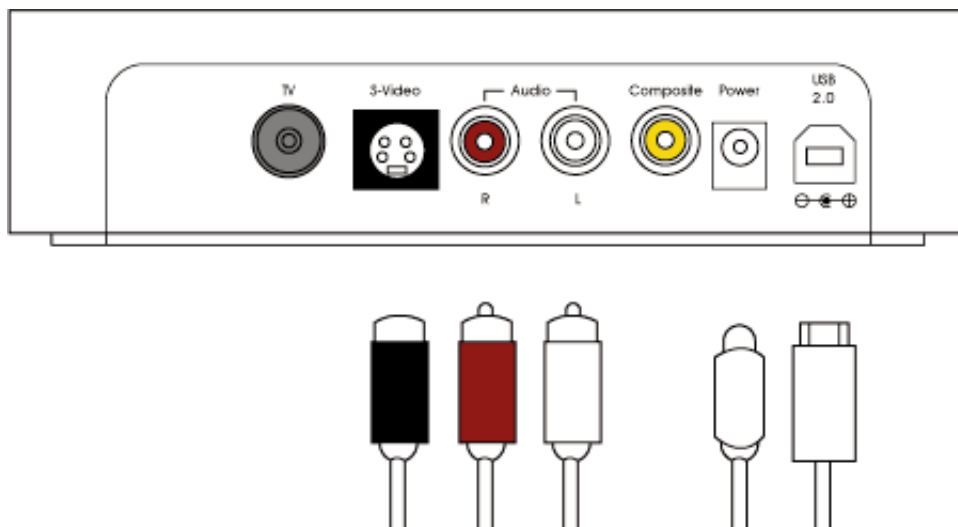


3. S-Video Connection

For digital TV subscribers and users wishing to capture video from an analogue source, an S-Video connection is strongly recommended as it will usually give you a higher picture quality compared to Composite.

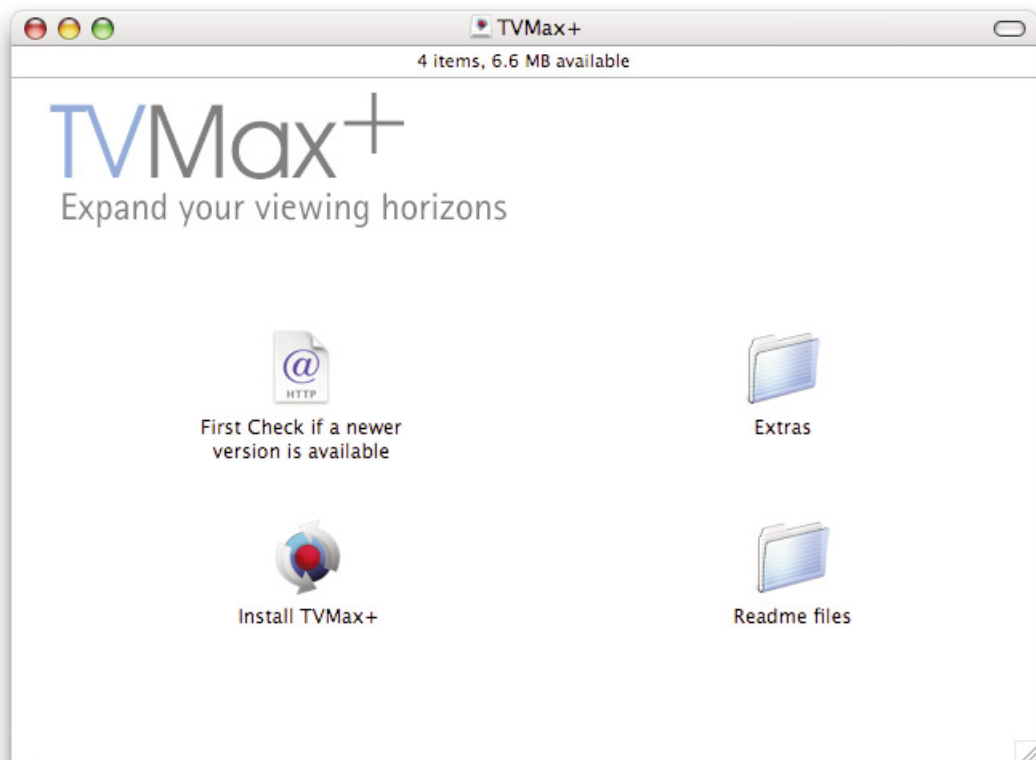
Note that S-Video do not carry audio signals, but only video signals. Using the left/right audio connectors and cables is necessary.

The diagram below shows a connection via S-Video



III. Software Installation

1. Insert the Installation CD that shipped with TVMax+™ card into your CD/DVD drive.
2. Before installing the version available on the CD, check for any available updates on the Miglia site. Double-click on the icon named 'Check for software updates now!' to access the website page.
3. Open the folder TVMax+ and double-click on the "Install TVMax+™" icon to launch the installer. Select the startup drive of your choice and click on 'Install'. Note that you will be asked for your administrator password when performing the installation.



4. Once the installation process is finished, quit the installer
5. The TVMax+ folder will be located in the 'Applications' folder of the volume containing your system software.

Setting up TVMax+ for viewing and recording

Introduction

This chapter will guide you through the initial setup of TVMax+. Before proceeding, make sure you have connected TVMax+ to a USB 2.0 port of your Mac. Also ensure the power supply is connected at all times. Connect your TV antenna via a coaxial cable or your video source (digital TV receiver for example) via Composite/S-Video.

I. Serial Number and Registration

1. Launch TVMax+ located in your Applications folder
2. You will be asked to enter your serial number located on the CD sleeve or the CD itself. Enter the 32 digits serial number with the dashes as shown below:
XXXX-XXXX-XXXX-XXXX-XXXX-XXXX-XXXX-XXXX

II. Setting up TVMax+ for TV reception

The Setup Assistant will launch automatically on the first startup of the software. You can access it at anytime via TVMax+ > Setup Assistant

The TVMax+ Setup Assistant will guide you through the set up process and create a list of settings based on your choices and hardware configuration.

1. Start by selecting your country. If your country is not in the list, select the relevant TV standard via the 'Other' option.



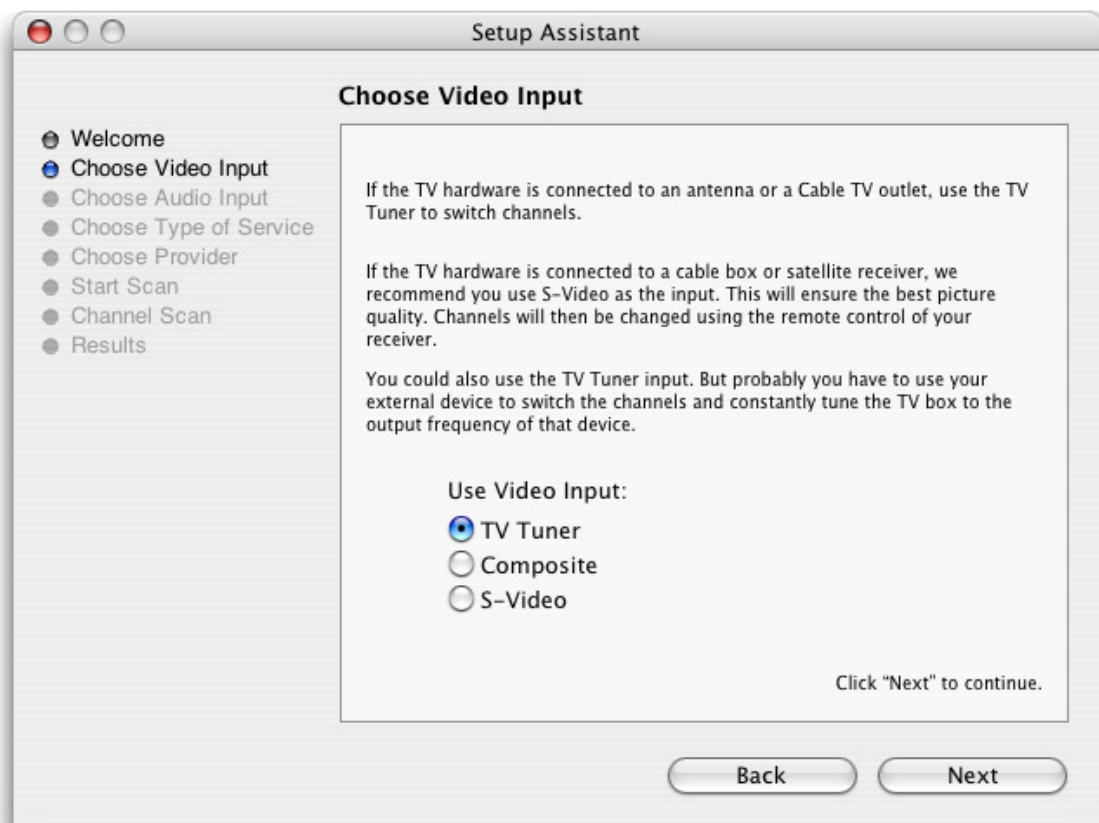
2. The Setup Assistant will ask you to choose the type of connection you are using.

If you connect your card directly to an antenna or a cable TV outlet, choose the 'TV Tuner' option.

If you are subscribing to a premium or digital cable service or to digital satellite, use the S-Video connection, as this will ensure the best picture quality possible. Channels will have to be switched with the remote control of your cable or satellite receiver.

If you are using TVMax+ for video capture from a VCR, camcorder or DVD player, choose either composite or S-Video.

Then Click Next



3. **Composite or S-Video Connection**

If you have selected TV Tuner as the input, please skip to step 6.

Select the audio input based on your connection.

Click on Next and skip to step 5

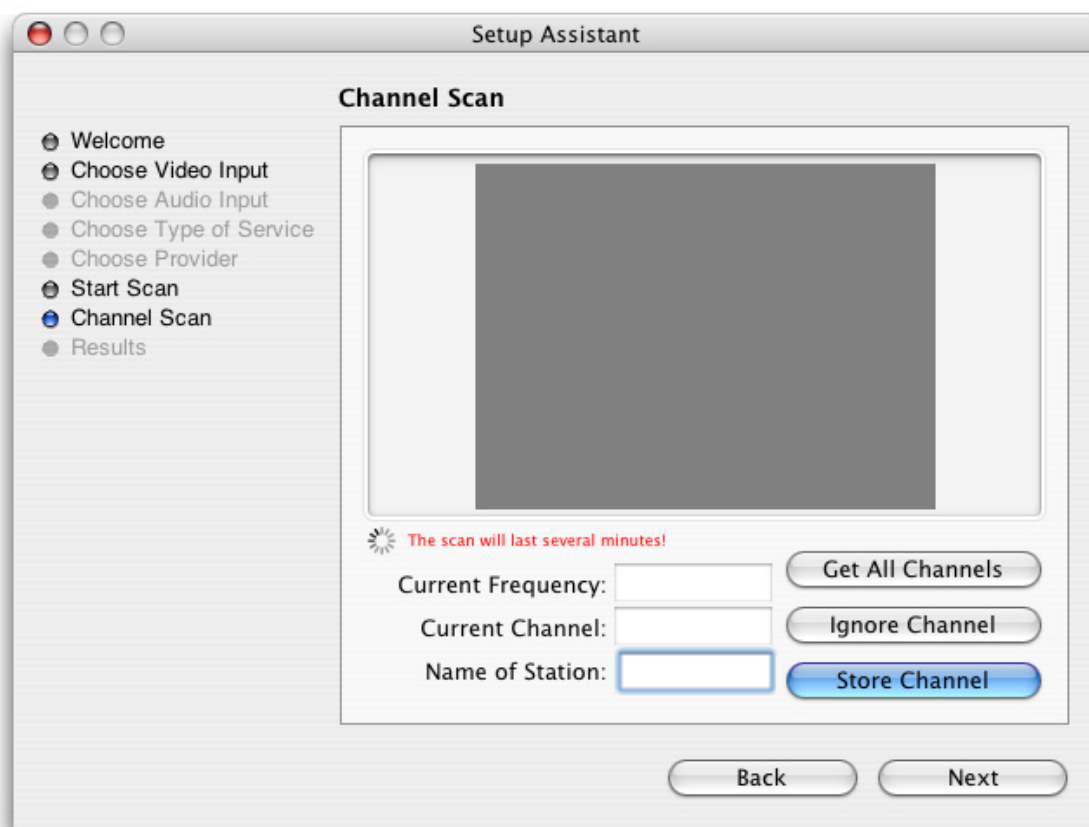
USA residents only

If you have selected TV Tuner as the input connection, the Setup Assistant will ask you to enter your ZIP code to download the relevant channel naming templates from TVGuide.com. This will name the channel automatically.

4. TV Tuner Connection:

Press the 'Start Scan' button to start the automatic channel search.

You will be given three options during the channel scan:



Get all Channels: The software will scan and store all channels without interruption until the process is complete. This option will not allow you to name individual channels and some channels with poor reception may be stored. Naming and deleting stations can be performed at a later stage in the preference menu.

Ignore Channel: When the software finds a channel, it will be displayed in the preview window leaving you the decision to store or discard it. By clicking ignore, you skip a channel and enable the scan to continue.

Next Channel: Once a channel is found you can enter a name (this is optional) and press 'Next Channel' to store it and continue the scan. Repeat the operation until all channels are found. The Assistant automatically moves to the next

5. Once this operation finished, the Setup Assistant will create video compression and display settings based on the performance of your computer. These settings can be modified at a later stage by using the Preferences menu.
6. If you wish to view live TV, you can open the TV window via the View menu.

Using the TVMax+ Menus

I. TVMax+ Menus

Various functions are accessible via the menu bar:

1. The TVMax+ Menu lets you access:

About box: Displays about box with version number

Preferences... Opens the Preferences menu for the TVMax+ application

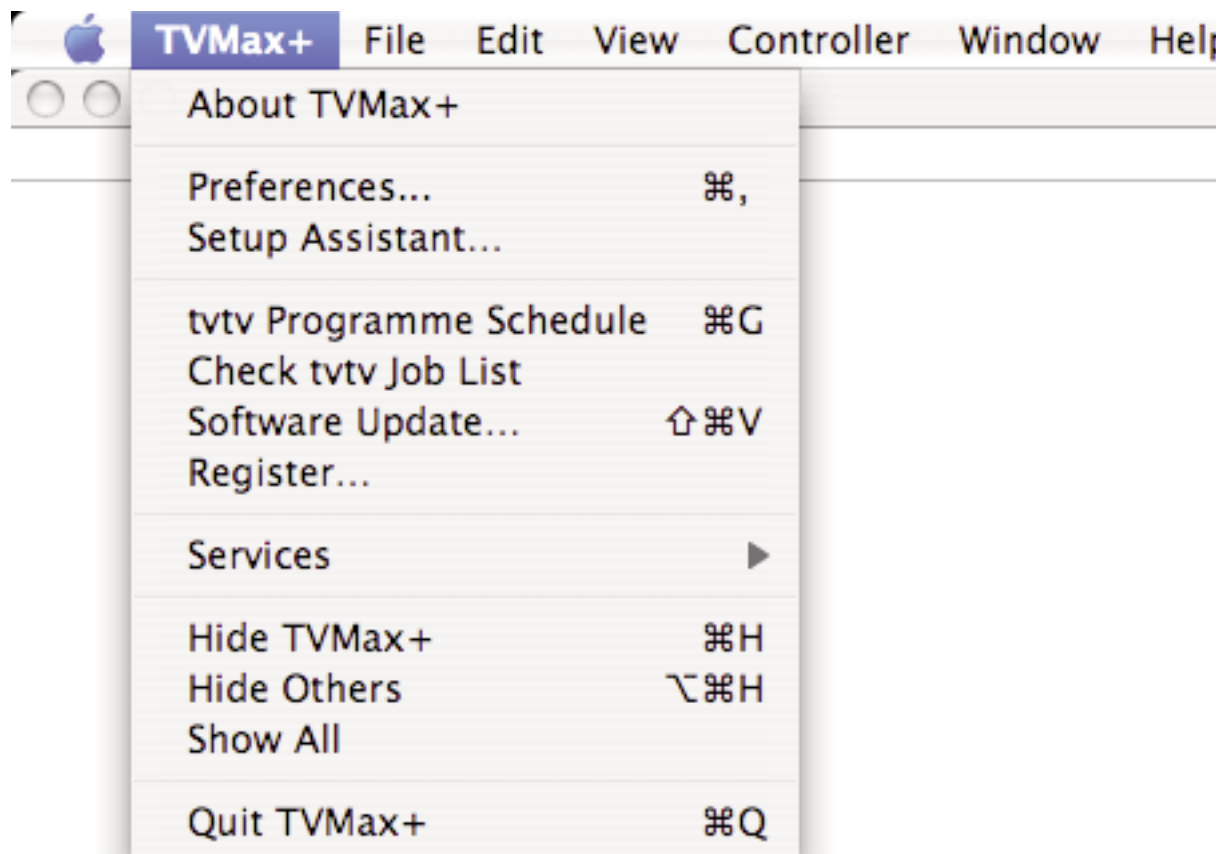
Setup Assistant: Launches the Setup Assistant

TitanTV Listings

or tvtv Schedule: Opens your web browser to access the tvtv or TitanTV online guide page.

Software Update: Checks online if a new version is available. This check is also performed automatically once a week if an internet connection is open.

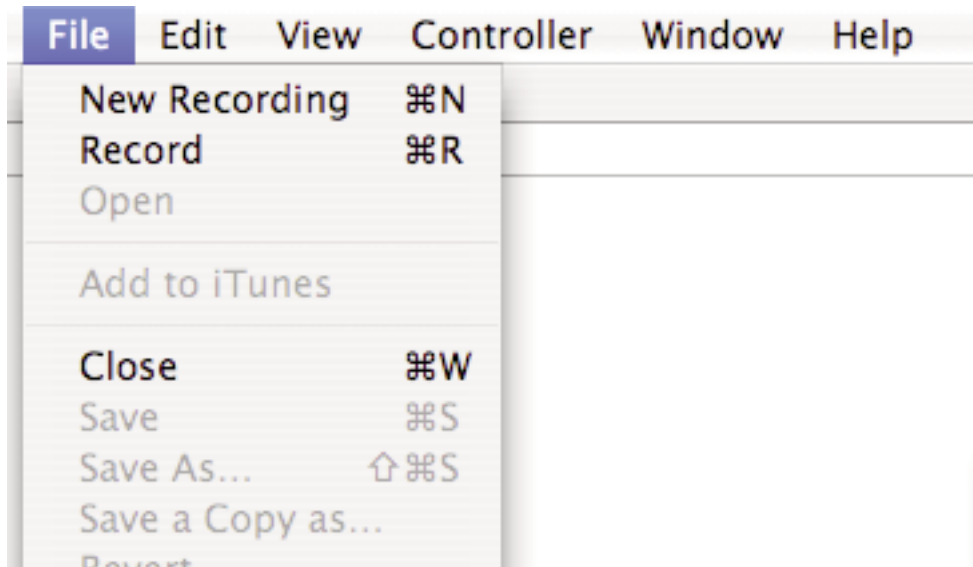
Hide/Show/Quit: Standard Hide, show and quit options.



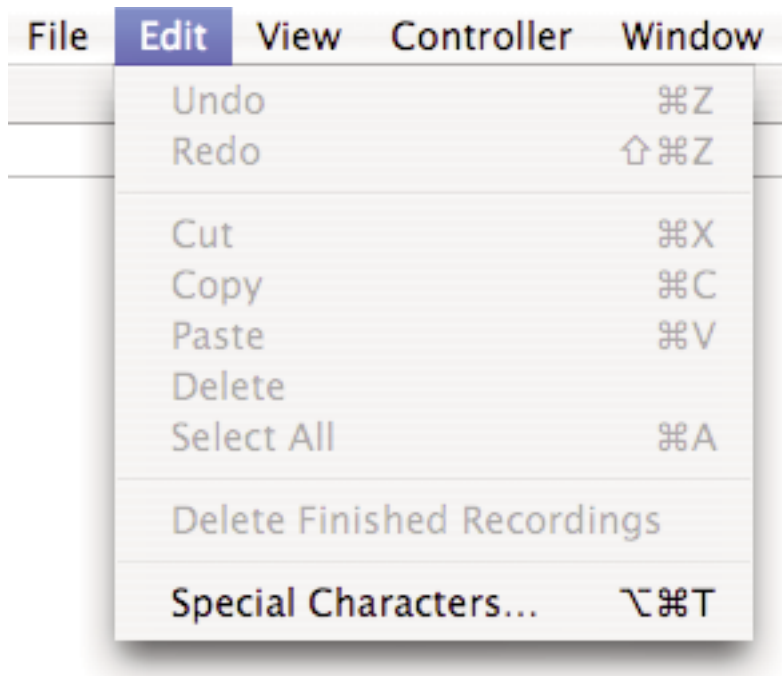
2. **The File menu** contains the following options:

New Recording: Enables you to create a new scheduled recording.

Record: Records what is displayed in the live TV window



3. **The Edit menu** contain the standard OS provided options as well as the option to clear entries in the Recordings window



4. **The View Menu** contains the video related commands.

Quarter Size: Displays the TV window in Quarter size

Half Size: Displays the TV window in half size

Actual Size: Sets the TV window to the original aspect ratio of the broadcast, eg. this is the picture as it is transmitted.

Double Size: Displays the TV window in double size

Full Screen: Displays the TV window in Full Screen mode, covering the entire screen

Picture

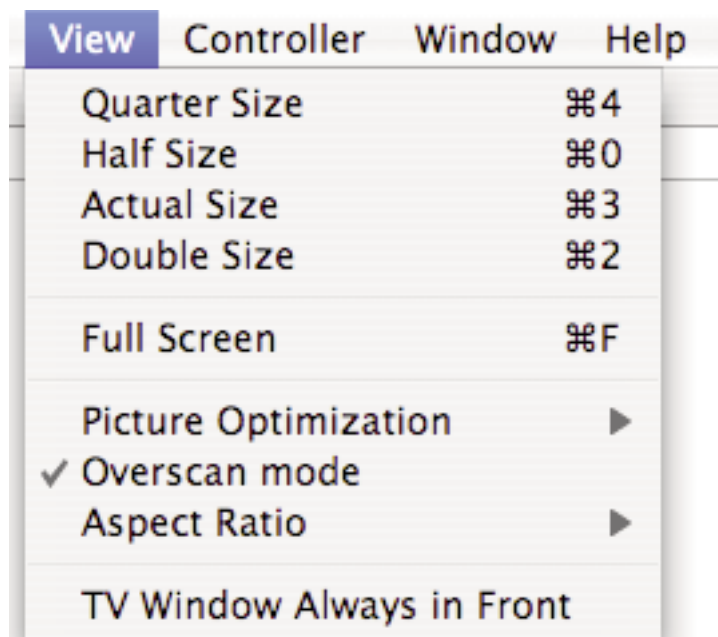
Optimization: There are four levels of picture optimisation. This option determines the quality of the stream displayed on the screen. The higher the value, the higher the amount of processor power required.

Overscan Mode: This option will hide the parts of the picture that are usually not seen on a TV

Aspect Ratio: Sets the aspect ratio of the picture. It's useful when going to full screen mode with a Widescreen monitor.

TV window always

in Front: Puts the TV window in front of all other applications. Useful if you want to watch TV while doing other tasks with your Mac.



5. **The Controller menu** contains the commands found on the onscreen remote control. This menu lets you control the timeshift (pausing live TV) feature as well as the TV channel selection.



Play: If the live TV window is in Pause mode, use this command to return to play mode

Pause: Lets you pause the live TV window

Jump

Forward: Lets you jump forward by 10 seconds. This option will only work if you have previously paused the live TV window.

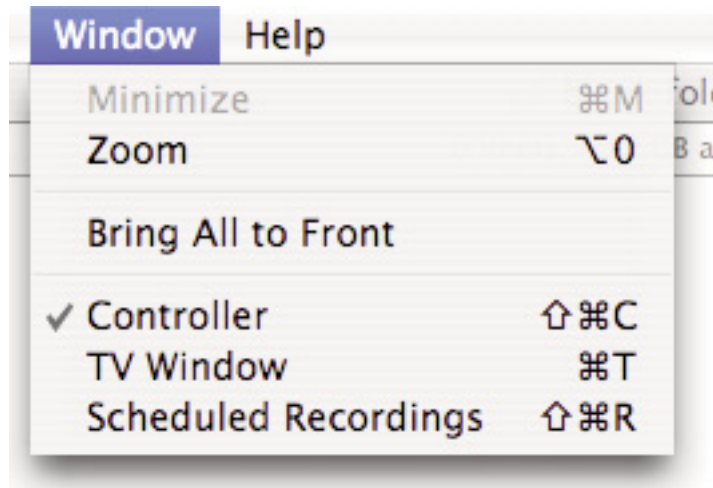
Replay: Lets you jump back by 10 seconds. You can access this option at any time, as TVMax+ is constantly recording the live video stream.

Go to Live: Jumps to the live TV stream currently received by TVMax+

Jump to

Beginning: Rewinds the video to the beginning of the cached recording.

- Channel up/down: Changes TV channel
- Switch back: Switches back to the channel you were previously watching
- Use Channel Name as index: Aligns the channel number with the TV station number.
- Video Input: Lets you select the video input to be used by TVMax+ to receive the video stream.
- Toggle Video Input: Cycles through the video inputs (TV Tuner, Composite, S-Video)
- Volume Up/Down: Increases or decreases the audio volume. This option affects only the live TV, not a recording
- Mute: Mutes the live TV window. This option affects only the live TV, not a recording.
- Stereo: Enables stereo audio



6. **The Window menu** contains commands for the various windows that the TVMax+ software displays.

Minimize, Zoom

Bring all to front: Standard Mac OS X commands found in any application

Controller: Shows the onscreen remote control

TV window: Shows the TV window

Scheduled

Recordings: Shows the Recordings window, which lists scheduled recordings performed with TVMax+

6. The Help menu contains the help files and a link to online help

Using the TVMax+ Onscreen Remote

The TVMax+ Onscreen Remote



1) Channel List

2) Channel up

3) Instant Replay - Jump Backwards 10 seconds through a video and then continue playing forward. Click repeatedly to jump back in 10 second intervals

4) Play/Pause Live TV

5) Live - Go to Live TV

6) Mute (click on speaker) and volume control

7) Go to EPG (tvtv or TitanTV depending on your location)

8) Record

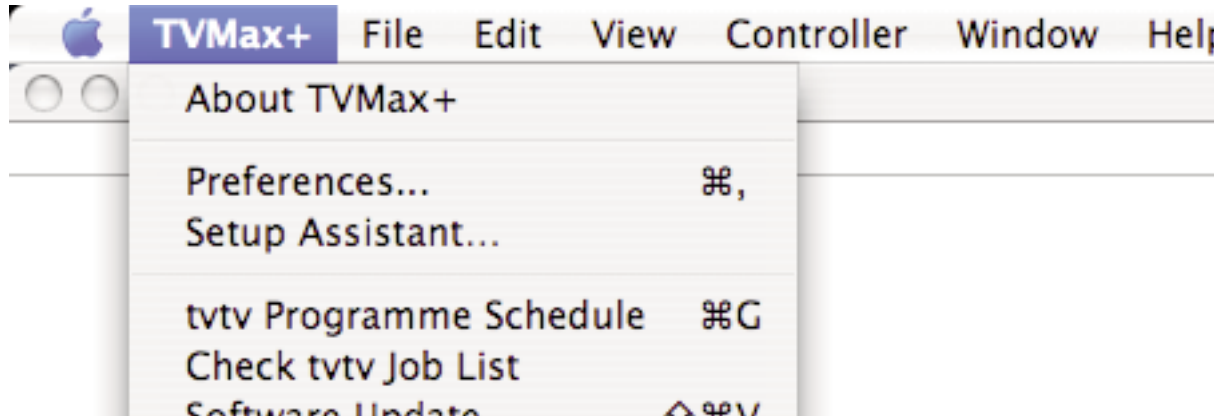
9) Jump Forward - Jump Forward in 10 second intervals

10) Channel Down

Using the TVMax+ Preferences

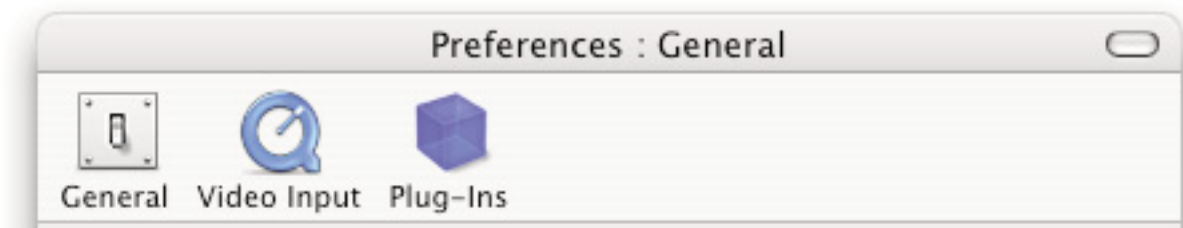
I. TVMax+ preferences overview

1. Select TVMax+ > Preferences



1. The preferences are divided in three categories:

- General:** This category allows you to set the general storage preferences
- Video Input:** This menu allows you to set all video and audio preferences.
- Plugins:** TVMax+ supports a Plugins architecture for a smooth integration with other applications or devices. This menu lets you set options for various built-in and third party plug-ins.



I. The General Sub-menu

1. **The Filename Template** allows you to enter pre-defined values for the name of the file that will be stored onto your hard drive when recording.

<input>: This value will add the input type (TVMax+) to the filename

<channel>: This value will add the channel number to the filename

<name>: This will add the channel name to the filename

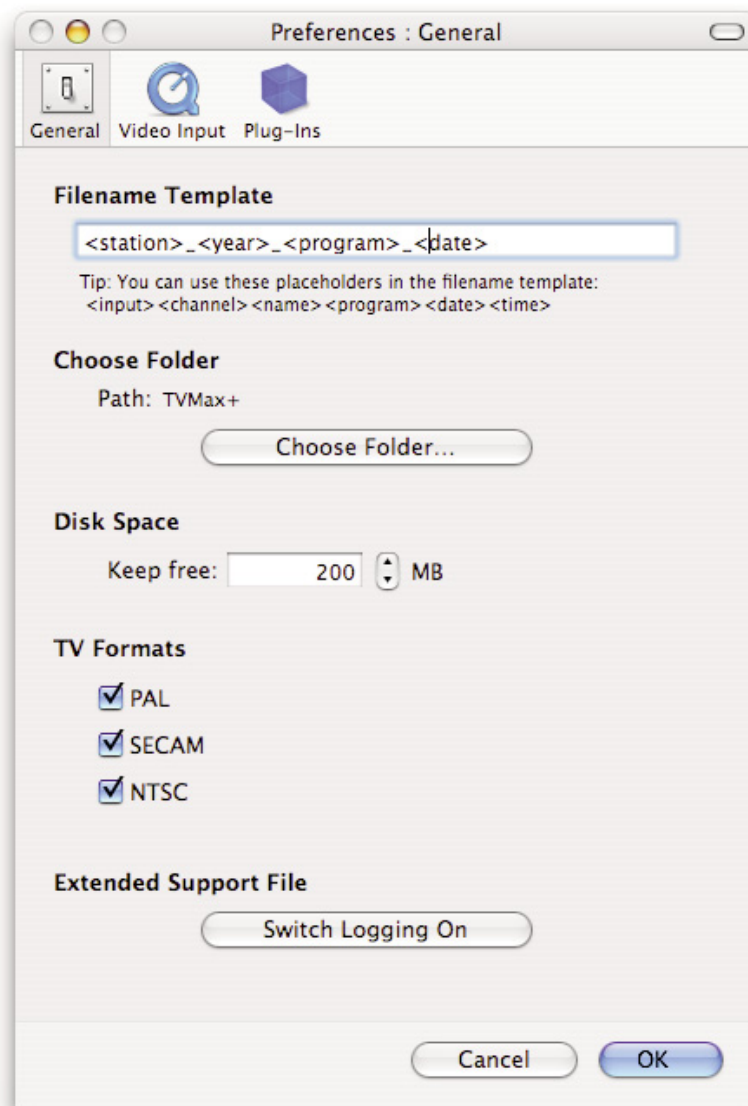
<program>: This will add a text string that can be chosen when creating a recording

<date>: This will add the start date of the recording

<time>: This will add the start time of the recording

Filename templates help you to easily identify the files you have recorded with TVMax+.

2. The capture destination menu enables you to select where you wish to store your recorded video. Click the 'Browse' button to modify this location.



3. The disk space option allows you to keep a defined amount of space free on your hard drive.
4. The TV formats section lets you activate or deactivate supported TV standards.
5. The Extended Support File lets TVMax+ generate a complete activity log. This should be switched off by default

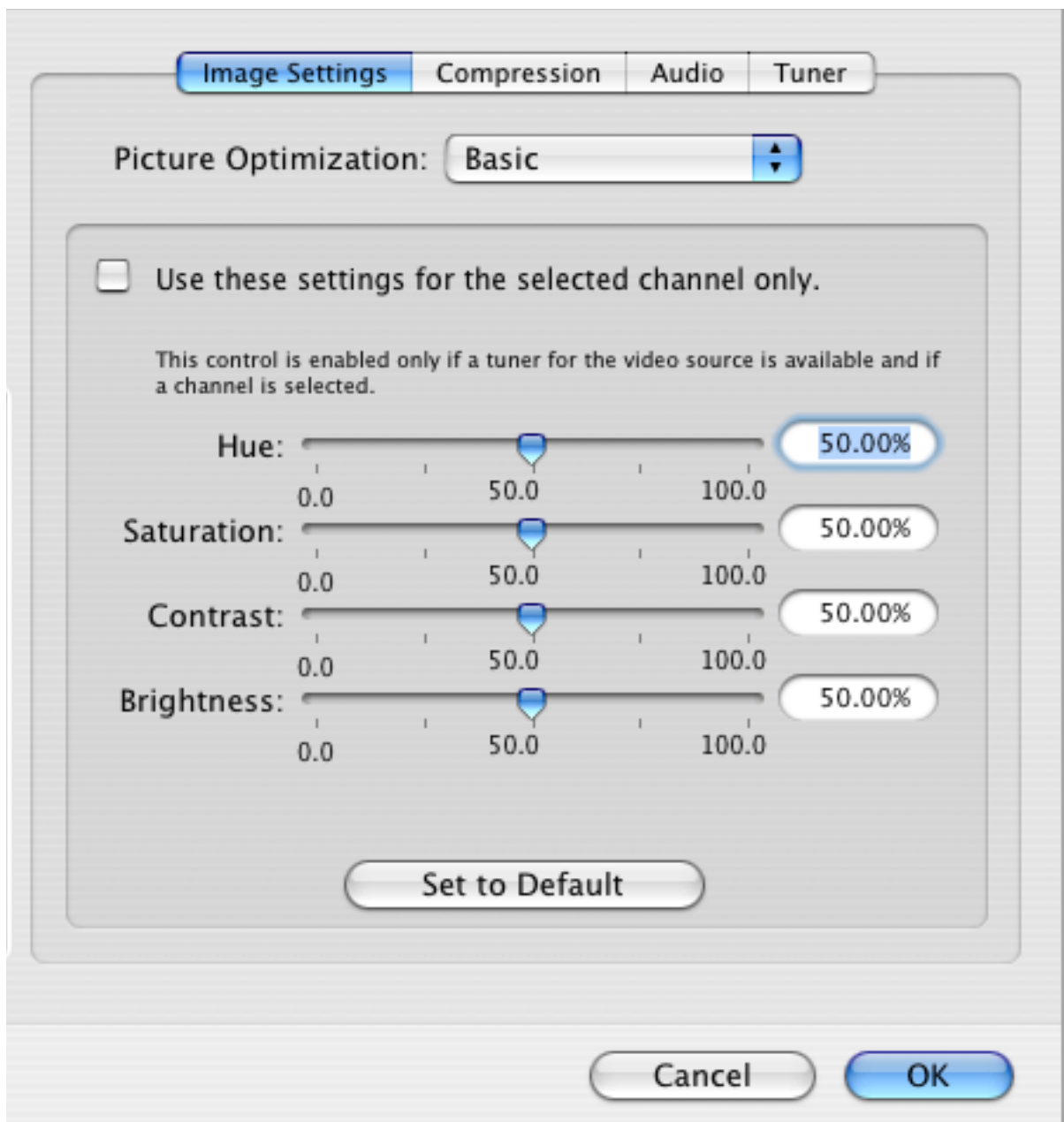
II. The Video Input Menu

The Video Input menu contains the most important controls you have over the video you will view or record to your hard drive.

A. Adjusting the video settings

1. **The image sub-menu** allows you to control the brightness, lighting, saturation and hue of the video. Adjustments can be made by moving the sliders or entering a value on the right hand side. If you wish to perform an adjustment on a single channel, display it in the preview window by selecting it in the Tuner sub-menu and ticking the box 'Use these settings for the selected channel only'.

The picture optimization setting lets you adjust the display quality on screen, eg. the MPEG-2 stream settings. The setup assistant will choose the best value automatically, depending on the processor speed of your Mac. Note that the higher the quality value, the more CPU power will be required.



2. **Video Compression** will adjust the video codec and quality settings for the video you will record to your hard drive.



TVMax+ features a built-in hardware encoding chip with support for several formats:

- | | |
|----------------|--------------------------------------------------------------------------------------------------------------------------------------------------------------------------------------------------|
| Full Size: | Records a file in MPEG-4. The Video Size is 720x576 (PAL) and 720x480 (NTSC). |
| iPod Good: | This option will generate a 320x240 MPEG-4 file directly readable by an iPod Video. |
| iPod Best: | This option will generate a 640x480 MPEG-4 file directly readable by an iPod Video. |
| iMovie HD: | This option will generate a MPEG-4 file directly readable by iMovie HD. No lengthy conversion will be required when opening the file in iMovie HD. The size for the iMovie HD option is 640x480. |
| Apple TV: | This option will generate a 640x480 MPEG-4 file directly readable by an iPod Video. |
| Sony PSP Good: | This option will generate a 320x240 MPEG-4 file directly readable by a Sony PSP. No lengthy conversion will be required to make the movie PSP Compatible. |
| DVD Full Size: | This format enables you to record in full size MPEG-2, the most common format for DVD players. The Video Size is 720x576 (PAL) and 720x480 (NTSC) |
| DVD Half-Size: | This format enables you to record in half-size MPEG-2. The video quality will obviously be lower than with full size MPEG-2 |
| Apple TV: | This option will generate a 640x480 MPEG-4 file directly readable by an iPod Video. |

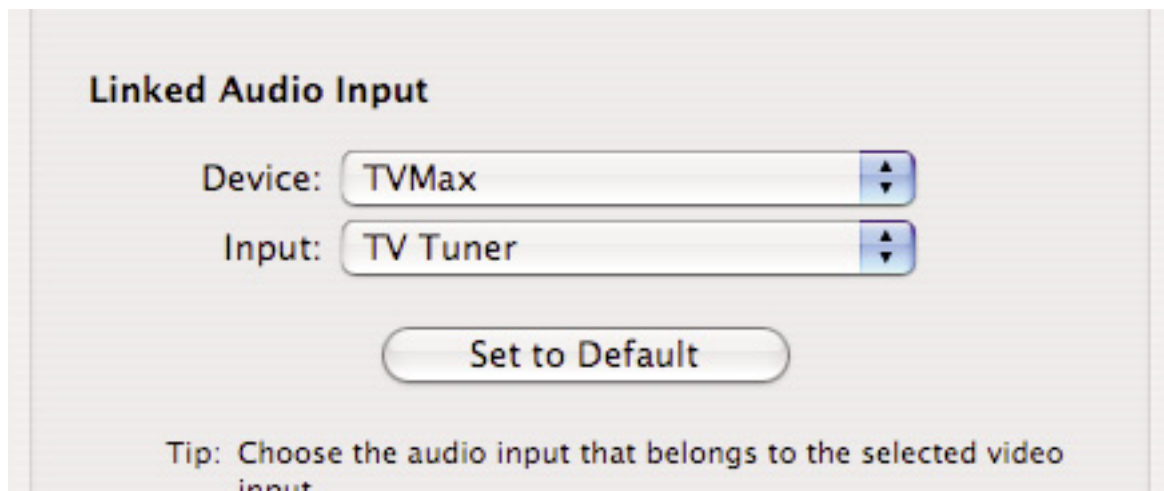
DivX Home Theater: DivX is similar to MPEG-4 and delivers great picture quality combined with small file sizes. The video size is 720x576 (PAL) or 720x480 (NTSC)

DivX Portable: TVMax+ lets you create video files compatible with the DivX Portable profile (352x288).

The Device list let's you select the desired input device, eg. TVMax+, the built-in audio or any other compatible USB or FireWire device.

If you are capturing via the TV tuner, TVMax+ and TV Tuner are the correct settings.

If you are capturing via S-Video or Composite, the 'Audio-IN' on TVMax+ is preferred.



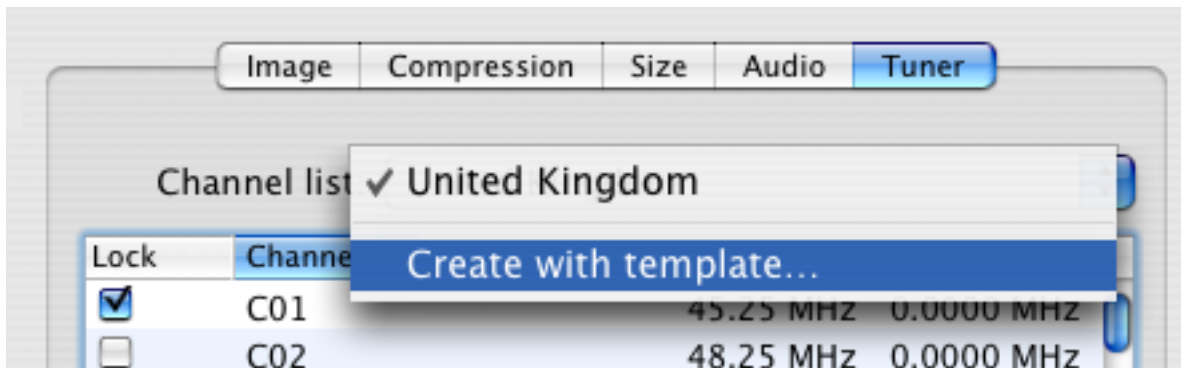
Audio settings for capture in the video input menu.

8. The TV Tuner Sub-menu

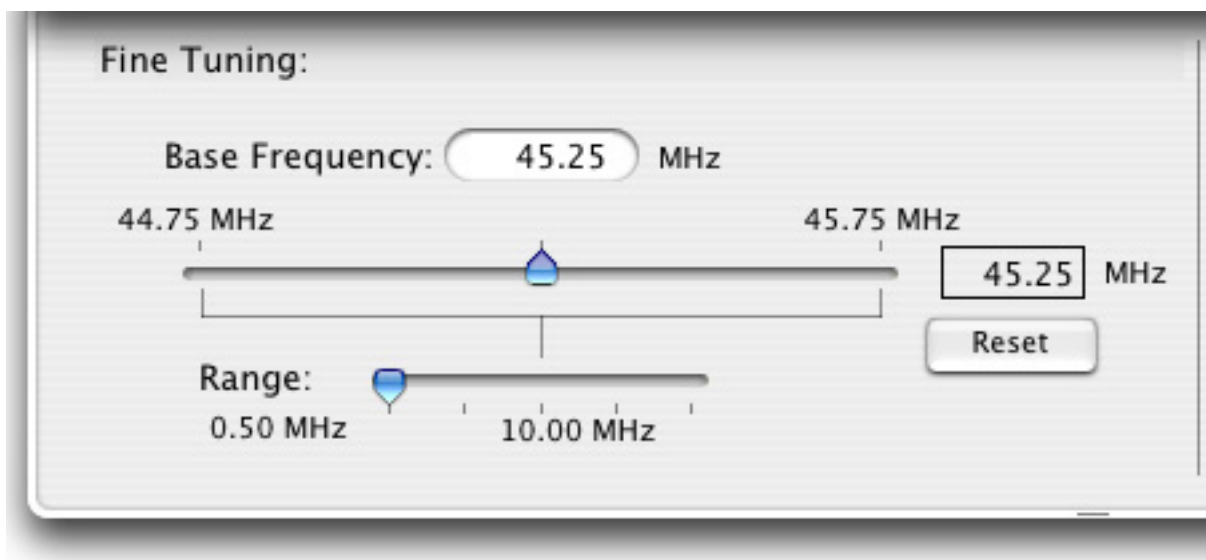
The TV tuner sub-menu allows you to create and select channel layouts. It also enables you to scan and fine-tune channels manually, without the help of the Setup Assistant.

It is possible to create a **new channel setup without using the Setup Assistant**. To Do so, select 'Create from Template' in the drop-down menu. The selected pre-defined channel list can then be scanned and fine tuned.

Note: This will not be required if you already have setup TVMax+ with the Setup Assistant.



The Finetune button at the bottom of the window enables you to modify the frequency of a channel manually. You can also enter the frequency manually in "Base Frequency".



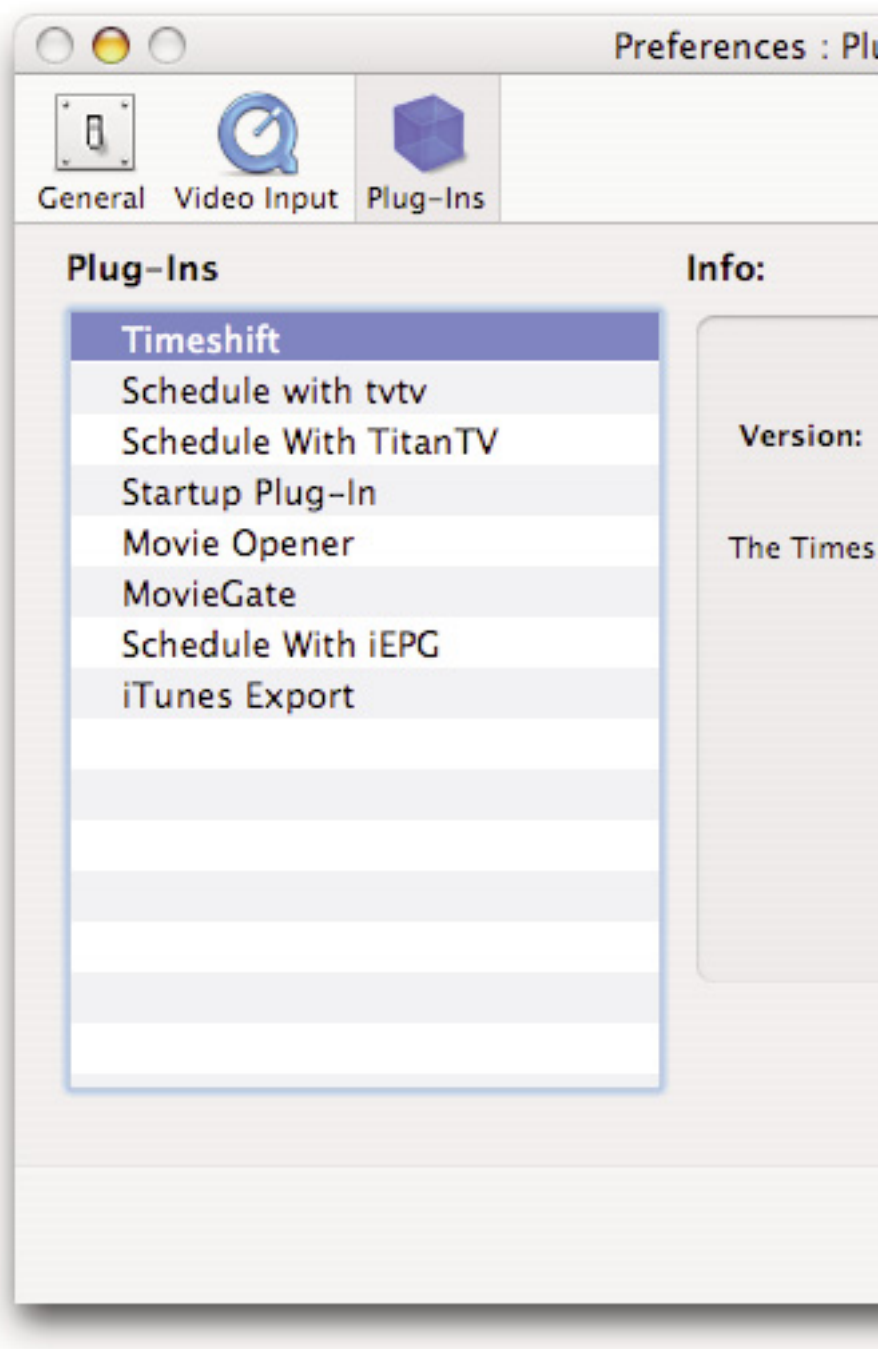
Channels can be renamed in the TVTuner window by clicking on the 'Name' part of the window.

A **channel can be added or removed** by ticking the "Lock" box in the row it is displayed in.

III. The Plugins Menu

TVMax+ supports a Plugins architecture allowing a smooth integration with third-party applications and devices.

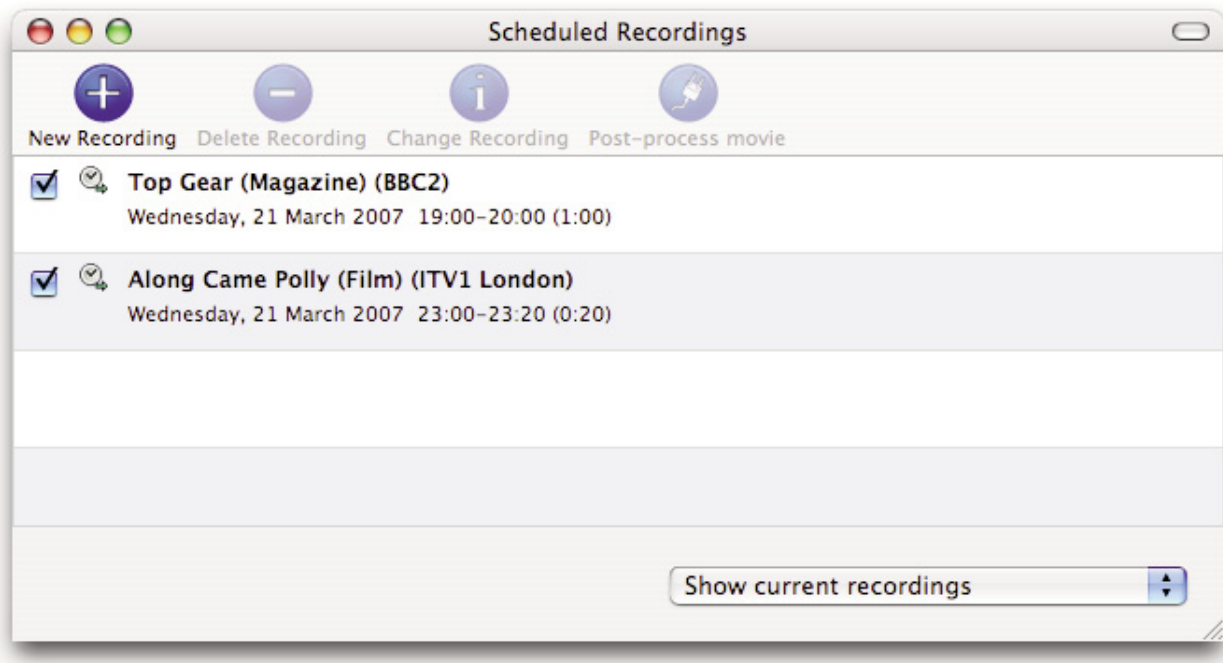
You may want to check this menu with every update of the application, as new plug-ins are added continuously.



Scheduling a recording with TVMax+

I. Schedule a recording with TVMax+

1. Click on View > Show scheduled recordings.
2. In the 'Scheduled Recordings' window, click 'New Recording' to create a new recording.

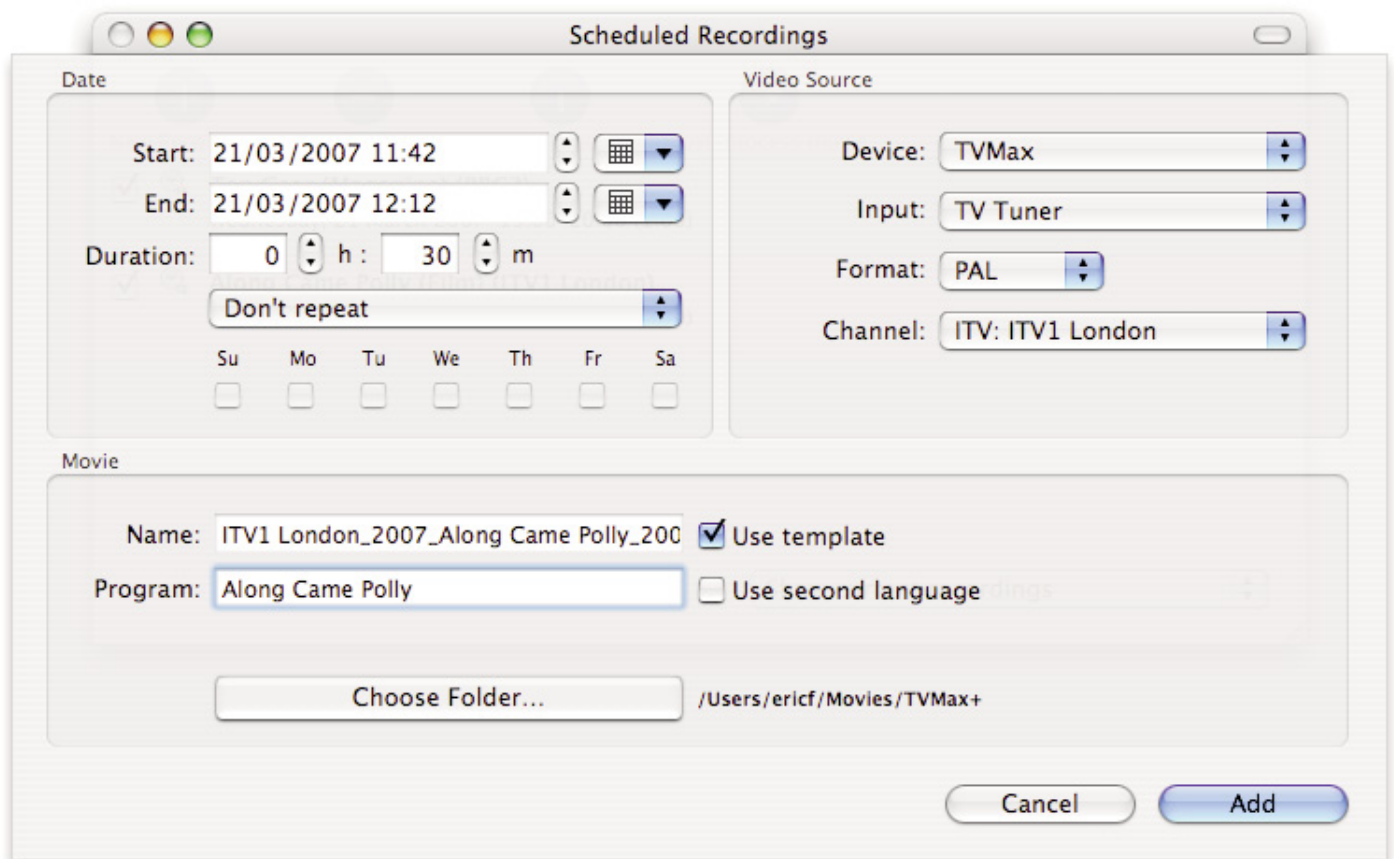


The Scheduled Recordings window displays the various recordings you have programmed

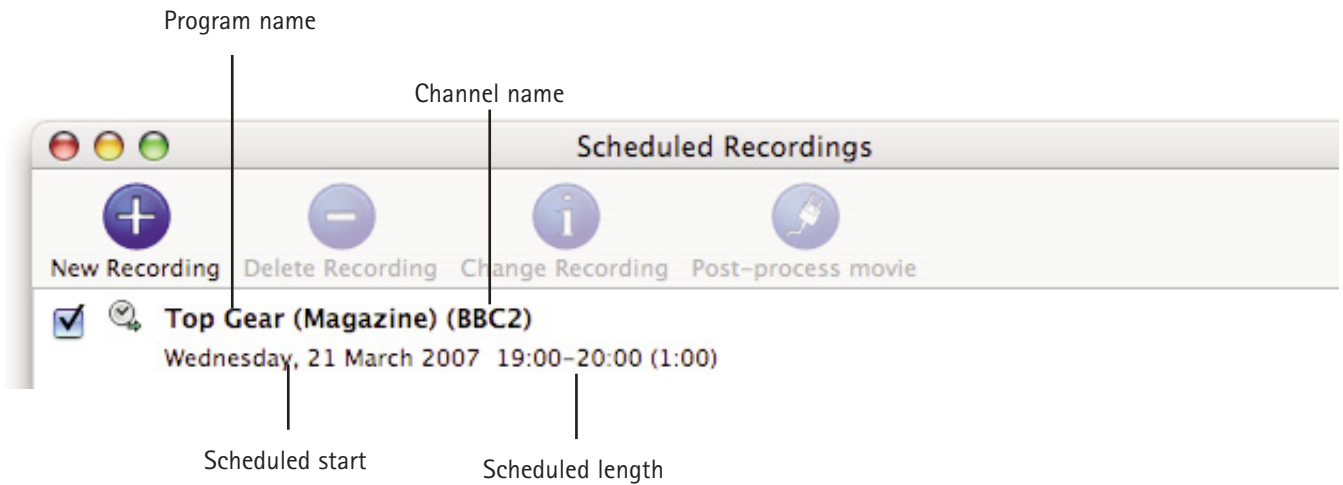
3. First, enter the date/time information.
 Select the start and end times by either entering them with the keyboard or the calendar button.
 You can enter several types of repetitions for the recording, which is useful if you are recording several shows broadcasted at the same time every day/week/month.

4. Then, enter the channel in the Video Source panel.
 You can also schedule a recording over the Composite and S-Video inputs if you are using a digital receiver.
 In this case, make sure you have set the decoder to the correct channel as TVMax+ has no ability to switch channels on external devices.
 Select the desired channel and enter the name of the program you wish to record (the name itself does not affect the recording. You can either use a Filename template or give a unique name to the recorded file.

5. Finally, in the Movie panel, enter the program name, which will be appended to the file name.
 The template function will append other values to the file name. The values are defined in the General panel in Preferences.
 Click 'Add record' when you are finished.



4. Your new recording will be added to the 'Scheduled Recordings' list (see 2.).



5. Scheduled recordings window list items. Displays the status of the recording via icons.



The recording is scheduled



Recording is active and will be performed.



Recording in progress

Scheduling a recording with TitanTV



Introduction

TVMax+ supports Decisionmark's TitanTV EPG (Electronic Program Guide) to browse, search and schedule recordings. Note that TitanTV is only functional in the United States.

I. Registering with TitanTV

In order to access the TitanTV program listings, you will first have to register online.

Open your web browser and enter the address <http://www.titantv.com>

Click on the "Sign up" button and follow the onscreen instructions to create an account.

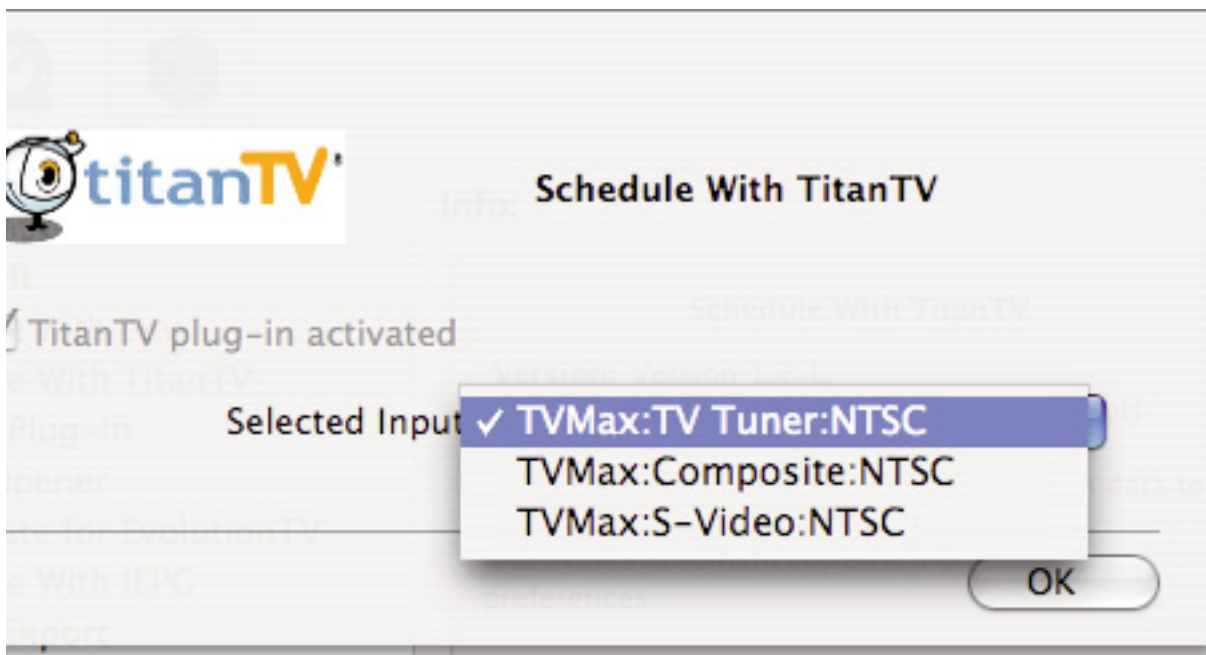
II. TitanTV Plug-in Settings

TitanTV integration in TVMax+ is achieved via a plug-in. The Setup Assistant will automatically adjust all the required settings for TitanTV. However, you can also configure the TitanTV plug-in manually.

You can change the video input used by the TitanTV plug-in by clicking on 'Show Settings'. If you receive your TV channels via the TV Tuner, select 'TVMax+:TV Tuner:NTSC' as the input.

If you use a cable or satellite receiver select either Composite or S-Video.

Note: If you are using a cable or satellite receiver, you will need to select the channel you wish to record from via the receiver's remote.



III. Scheduling a recording with TitanTV

1. Select 'TitanTV TV Listings' from the TVMax+ menu. This will launch your browser and redirect you to the TitanTV login page
2. Enter your username and password you created during TitanTV's sign up process.
3. You can now browse or search the local TV listings.
4. Each individual TV program has a detail window accessible through a hyperlink.

The screenshot shows a web interface for TitanTV. At the top, it says "titanTV PROGRAM DETAILS" and "Show Additi". Below this are two buttons: "Record" with a red square icon and "Add Reminder" with a yellow pencil icon. The main content area is a light yellow box with a black border. It features the title "Who Wants to Be a Millionaire" in bold. To the right of the title is a box containing the time and date: "4:00 PM, 30 min", "Mon 03/19/2007", and "WXIA 6". Below the title, it says "Game/Other" and "TVG, English". A description follows: "Syndicated version of the popular prime-time quiz show, in which contestants answer increasingly difficult questions for cash prizes up to \$1 million." At the bottom of the page, there is a blue footer with the text "Copyright © 2007 Decisionmark Corp. All rights reserved."

5. To schedule a recording, simply navigate to the detail window and click on the red record button. A file containing the scheduling information will be downloaded and opened in TVMax+.

Scheduling a recording with tvtv

Introduction

TVMax+ supports the online TV guide service "tvtv", available in several European countries. The tvtv service provides an overview of daily and weekly TV programmes and helps you to easily schedule recordings.

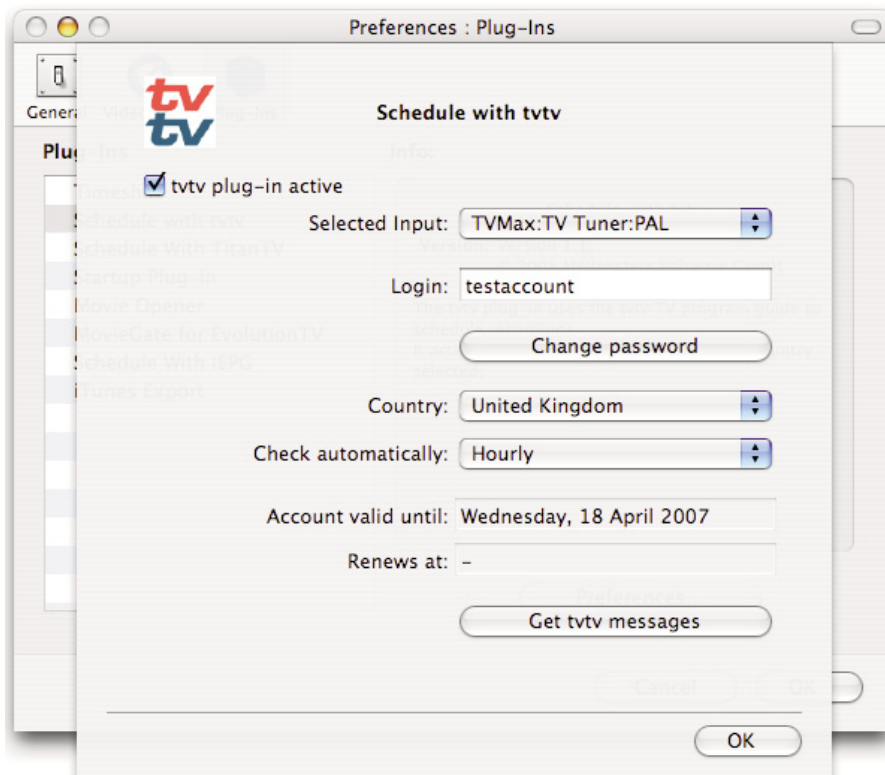
A free 30 day trial account is available for TVMax+ owners.

I. Initial tvtv setup

If you are living in a country covered by tvtv, the Setup Assistant will automatically give you the option to register with tvtv. Follow the onscreen instructions to either create a tvtv account (you will be redirected to the tvtv website) or enter your existing login name and password.

II. The tvtv plug-in

tvtv integration in TVMax+ is achieved via a plug-in. The Setup Assistant will automatically adjust all the required settings for tvtv. However, you can also configure the tvtv plug-in manually.



Selected Input: Lets you select the video input. Normally, this will be the TV tuner, but you can also use Composite or S-Video if TVMax+ is connected to a digital TV receiver (Cable, Satellite, Digital Terrestrial, etc...). However, the digital receiver will have to be set to the correct channel for the recording, as TVMax+ cannot control an external device.

Login: Shows your tvtv login name

Change Pass: Enables you to change your tvtv password

Country: Country selection. Note that tvtv is not available in all European countries.

Check automatically: Selects the frequency with which the software should check your joblist on tvtv.

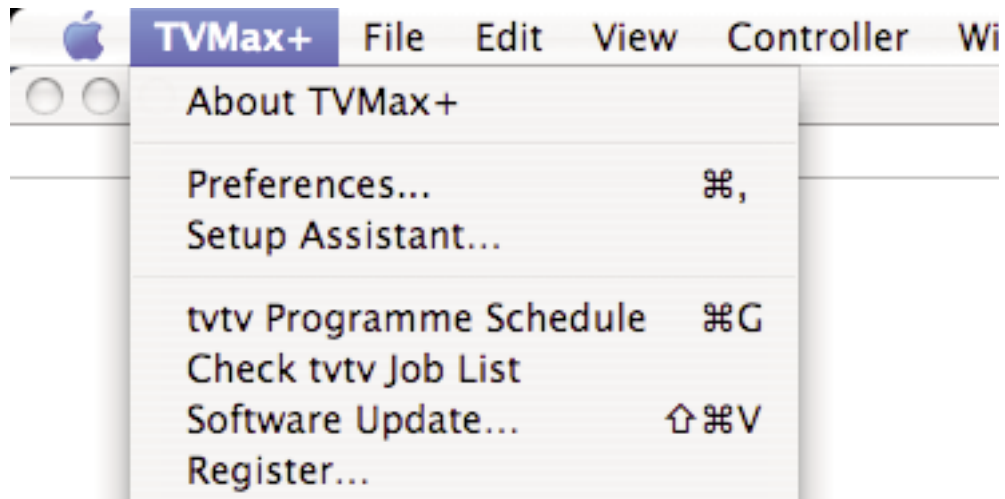
Account valid until: Shows the date when the tvtv account will expire

Get tvtv messages: Shows the latest messages sent by the tvtv service.

III. Using the tvtv service

3.1. Accessing tvtv

Once you have created your tvtv account, you can access the programme guide and schedule recordings for TVMax+. When the tvtv plug-in is active and setup, the TVMax+ menu (menu bar) displays two options.

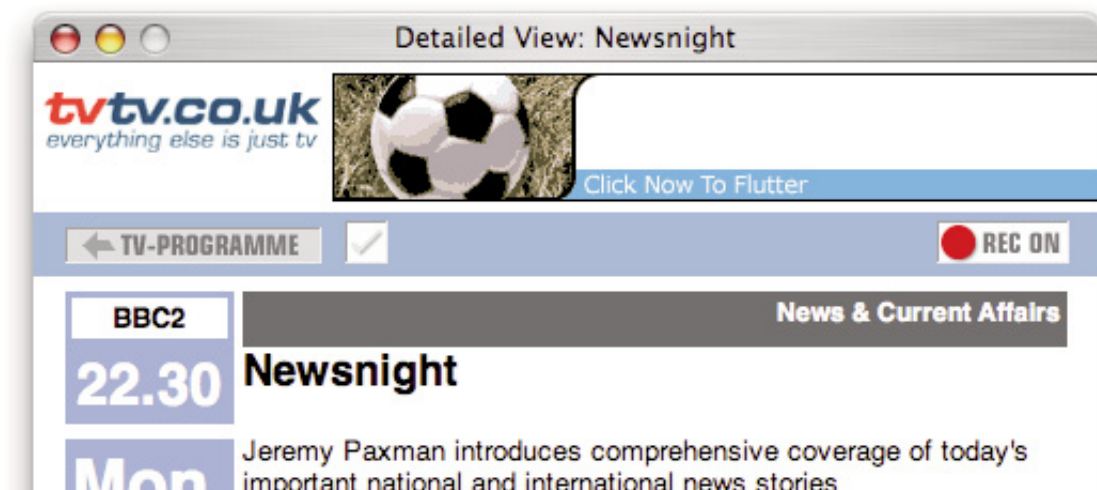


tvtv Programme Schedule: This option will launch your web browser and open the tvtv page.

Check tvtv job list: This option will synchronise TVMax+'s scheduled recordings list with the tvtv job list. tvtv's job list contains the list of recordings you have selected.

3.2. The tvtv job list and scheduling a recording

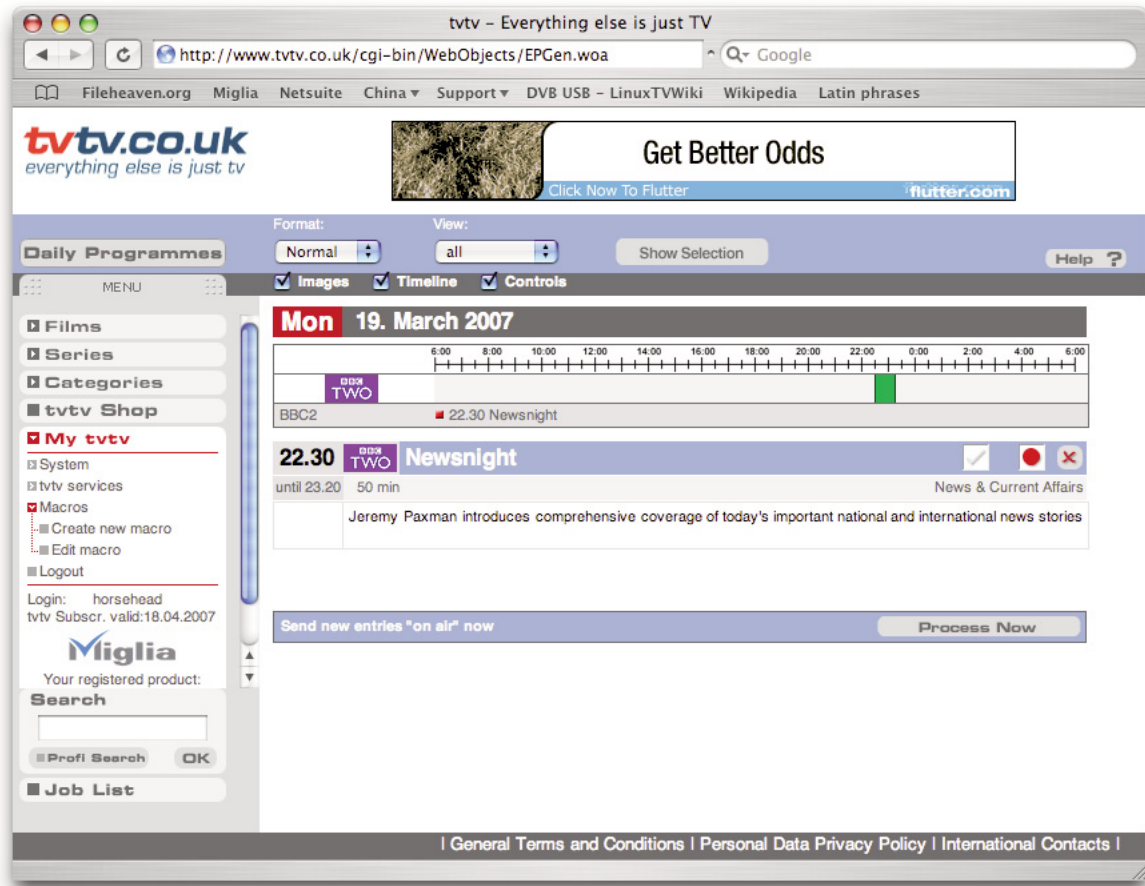
The tvtv service uses a joblist, which contains the list of recordings you have selected on the tvtv page. Start by getting the overview of today's programmes and select a programme you wish to record. A new 'details' window will open. Press the 'REC OFF' button and it will switch to 'REC ON' signifying the programme is added to your joblist



Click on Joblist located in the bottom left corner of the tvtv page.

Your joblist will now show the recordings you have scheduled. Click on "Process now" to confirm the recordings.

Note: You need to click on process now, otherwise the recordings will not be confirmed and will not be available to TVMax+.



TVMax+ will automatically check the joblist at defined intervals. You can also manually check the joblist by using the "Check tvtv job list" option in the TVMax+ menu.

Programmes scheduled with tvtv will then be taken over by the application.

3.3. Channel naming synchronisation

tvtv and TVMax+ compare the TV station names to schedule a recording. This requires you to name the TV channels as they are named by the tvtv service. Should there be a discrepancy, a window asking you to rename the channels will appear when you check the tvtv joblist.

TVMax+ Plug-ins



I. Using the plug-ins

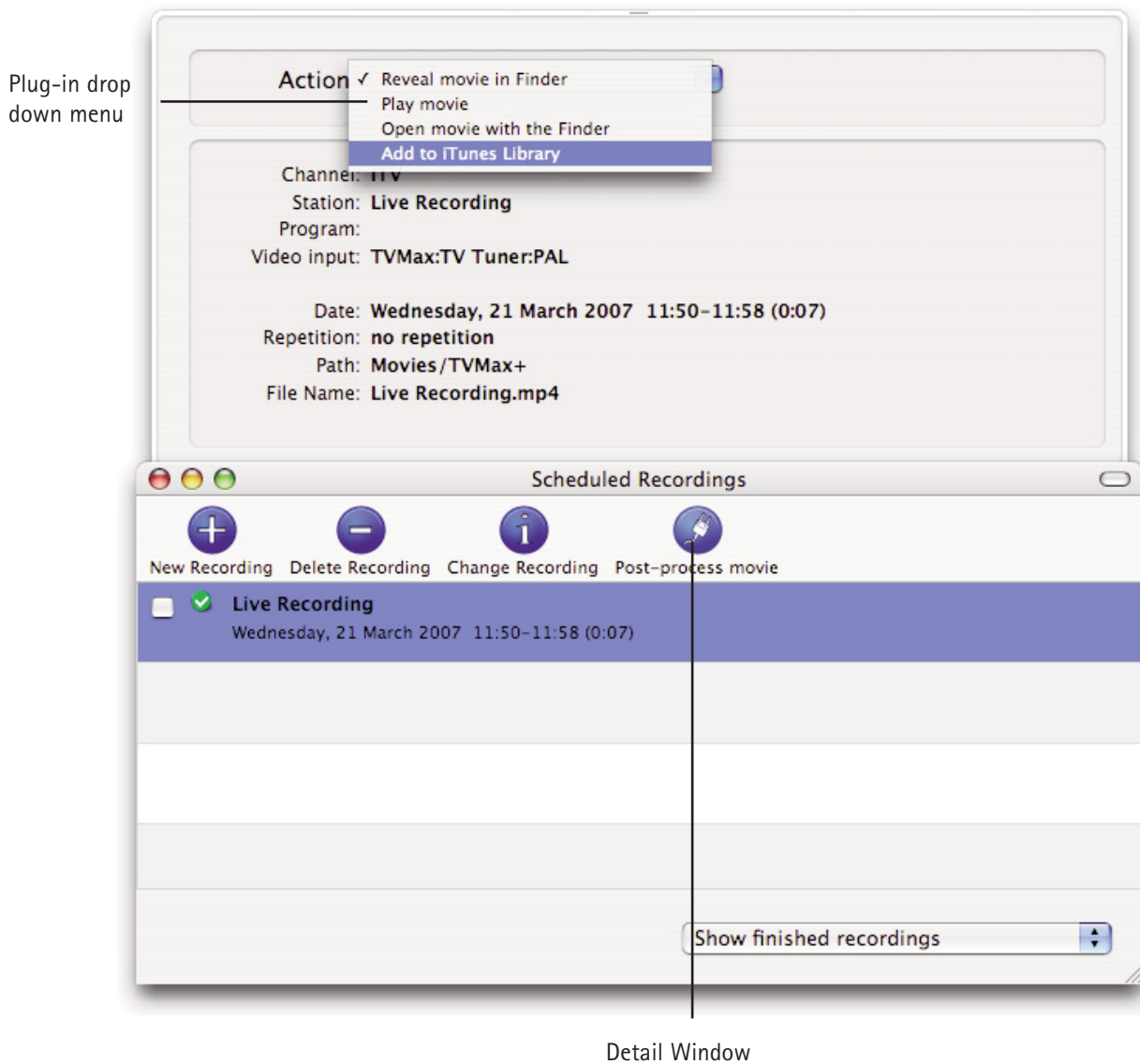
1.1 Plug-in Settings

Plug-ins settings are available in Preferences > Video Input > Plug-ins > Show settings
Note that some plug-ins do not have any settings.

1.2 Using the plug-ins

To access a plug-in, highlight a finished recording and select Post-Process Movie. A drop down menu will give you access to the installed plug-ins.

Note: the recording must have been completed before you can use a plug-in.



II. Current Plug-ins

2.1 Built-in Plug-ins

Post-Processing Plug-ins :

TVMax+ Reveal in Finder: Shows a recorded file in the Finder.

TVMax+ Movie Player: Enables you to play a recorded movie from within TVMax+

TVMax+ Movie Opener: Lets you launch a movie file via the Finder. This will most likely open QuickTime Player

MovieGate: Lets you burn DVD's from within the application.

Add to iTunes: Lets you add a recording to your iTunes Playlist.

Communication Plug-ins:

Schedule with TitanTV: Provides the TitanTV web scheduling functionality. Note that this plug-in is activated by default if USA is selected as a country by the Setup Assistant.

User Options:

Video Input: Lets you select the desired video input for TitanTV recordings.

Schedule with tvtv: Provides the tvtv web scheduling functionality. This plug-in is activated by the Setup Assistant (or manually) and will work in several European countries.

Playing back files created by TVMax+

Introduction

TVMax+ supports various capture formats, which can be played back by most if not all software video applications. However, you may need to install additional video codecs in order to play back some formats. A Video codec is an extension, which enables a software video player (like QuickTime Player) to read a video file.

I. Software Video Players

Miglia currently recommends two software video players:

- QuickTime Player: QT Player is part of a standard Mac OS X installation. You will find the software in the Applications folder on your hard drive.
- FrontRow; FrontRow comes with Macs that have a built-in IR rev
- VLC Media Player: VLC (Video Lan Client) Media Player is an open source project available on several platforms. VLC provides broad compatibility and excellent performance.

II. Required Codecs

You may need to install a video codec to playback some formats. The requirements are listed below:

- MPEG-2 (DVD): MPEG-2 playback is directly supported by VLC, without any additional software installation. If you wish to play back an MPEG-2 file in QuickTime Player, you will need to install the MPEG-2 Playback component available from Apple's website (Note: The MPEG-2 Playback component is not free of charge).
- MPEG-4: No additional codecs are required to playback an MPEG-4 file. Simply open the file in QuickTime Player, FrontRow or VLC. This applies to files recorded for iPod, iMovie HD, AppleTV, PSP and Full size (MPEG-4).
- DivX: To playback DivX files, you will need to download the free of charge DivX component available from <http://www.divx.com>
This is not required if you use VLC.

Warranty Agreement

Hardware Products:

Miglia Technology warrants your hardware product against any defect in material and workmanship, under normal use, for the designated warranty period. The warranty becomes effective from the date of purchase by the end user.

If the product is found to be defective within the warranty period, Miglia Technology Ltd will, at its sole option, repair or replace the defective product.

Miglia Technology Ltd will not, under any circumstances, be liable for direct, special or consequential damages such as, but not limited to, damage or loss of property or equipment, loss of profits or revenues, cost of replacement goods, or expense or inconvenience caused by service interruptions.

This warranty is void if:

- The product was operated or stored in abnormal use or maintenance conditions.
- The product was repaired, modified or altered or undergone attempted repair by non-authorized personnel, unless Miglia Technology Ltd has authorized such repair, modification or alteration.
- The product was damaged, abused or misused
- The product was installed without following the supplied installation instructions.
- The serial number of the product is defaced, modified or missing.
- The "Warranty Void" seal on the casing has been modified, removed or broken.

The decision of Miglia Technology shall be final and binding with regards to the condition of product return and eligibility of repair or replacement.

Software Products:

Software Products are covered specifically for defective media or manuals only, for a 14 day period. The software license you acquired cannot under any circumstance be transferred back to Miglia Technology Ltd. Miglia does not warrant or represent that all third-party software or hardware will function error-free when used in conjunction with its products.

How to obtain warranty service:

To obtain warranty service, within 30 days of the date of purchase, please contact the retailer from whom you made your purchase. To obtain warranty service, after 30 days of the date of purchase contact Miglia Technology Ltd's Technical Support Service. A proof of purchase will be required to confirm that the product is still under warranty. Should Miglia Technology Ltd's Technical Support diagnose a fault on your product, a Return to Manufacturer Authorisation (RMA) number will be issued to you.

All products returned to Miglia Technology Ltd must be securely packaged in their original box and shipped at the customer's cost inclusive of any requested documentation. Return shipment of repaired or replaced product will be covered by Miglia Technology Ltd.

Any product returned without an RMA number issued by Miglia Technology Ltd's Technical Support Service will be refused.